

WILL GARTHWAITE

Hair: **Dark Brown**
 Height: **6'1**
 Training: **Webber Douglas Academy**
 Playing Age: **20-30**
 Spotlight: **2581**

SKILLS

Accents:
 RP native, London, Cockney, Geordie, Italian, Eastern European, Standard American, Australian, South African, New Zealand

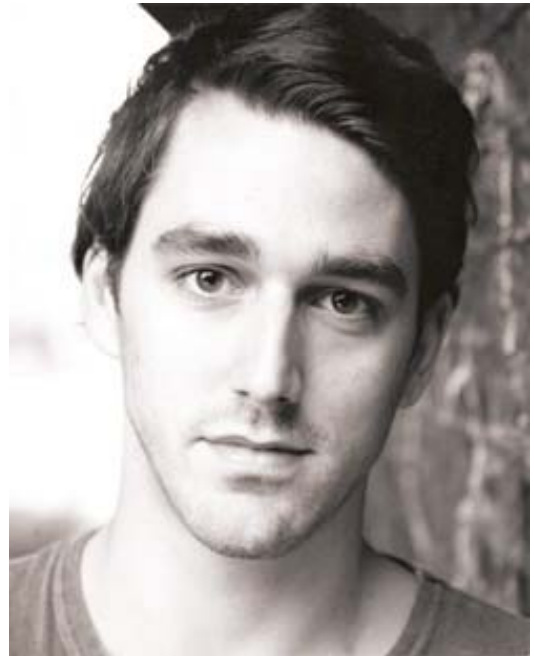
Languages:
 French

Singing:
 Baritone

Dance:
 Ballroom, Historical

Sports:
 Football, Cricket, Golf, Pool, Sailing, Shooting, Rollerblading, Tennis, Skiing, Yoga

Skills:
 Stage Combat, Radio Presenting, Additional Dialogue Recording, Audio Books, Audio Drama, Physical Comedy, Writing, Computer Literate, Experienced DJ



THEATRE *Includes:*

Psychiatrist	Lone Star/Private Wars	King's Head Theatre	Henry Mason
Claudio	Measure for Measure	Rosemary Branch Theatre	Helen Tension
Humphrey Bogart	Play It Again Sam	Hyena Comedy Club, Newcastle	Chris Fortune
Doctor Prentice	What The Butler Saw	Hyena Comedy Club, Newcastle	Paddy Alexander
Baby	Mojo	Hyena Comedy Club, Newcastle	Flora Bagenal
Michael	The Thickness of Skin	Webber Douglas	Martin MacDougall
Gerald	A Woman of No Importance	Webber Douglas	Jill Colby
Jake	A Lie of the Mind	Webber Douglas	Stuart Wood
Willie Mossop	Hobson's Choice	Webber Douglas	David Wilde
The Father	Blood Wedding	Webber Douglas	James Carson
Military Police	Terrorism	Webber Douglas	Rhys Thomas

FILM *Includes:*

Devil	In His Blood	Tamura Productions	Matthew Gauci
Human Orchestra	Brightstar	BBC Films/Hopscotch	Jane Campion
Interviewee	Oh Happy Day	Entertainment	Ian Poitier
Silvio (lead)	The Voice	Firebrand	Dennis Madden
Josh (lead)	Solace by the Sea	Wild Taboo Productions	Matthew Gauci
Silvio (lead)	Private Wars	Tamura Productions	Henry Mason
		Independent Production	

COMMERCIAL *Includes:*

Business Man Waiter	Dot.Tel Jimmy Choo	The Rocket Science Group Ridley Scott Associates	Victoria Pile Henry Mason
------------------------	-------------------------------------	---	------------------------------

CORPORATE *Includes:*

Patron	Siemens Technology	Contra Service Productions	Norbert Vander
--------	---------------------------	----------------------------	----------------

PHOTOGRAPHY *Includes:*

Model	Pensions	Image Source Limited	Charles Sturge
-------	-----------------	----------------------	----------------

J B Personal Management

tel: 0207 575 3102; fax: 0207 575 3028; mob: 07703 734 194
email: info@jbpersonalmanagement.com; www.jbpersonalmanagement.com
Studio 118, Westbourne Studios, 242 Acklam Road, London W10 5JJ